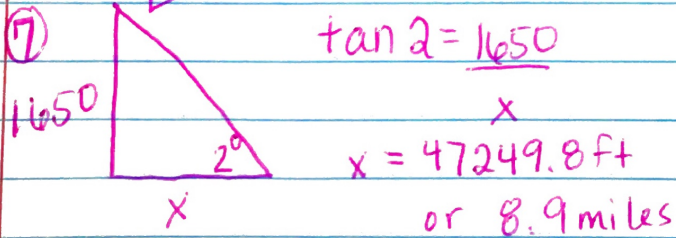
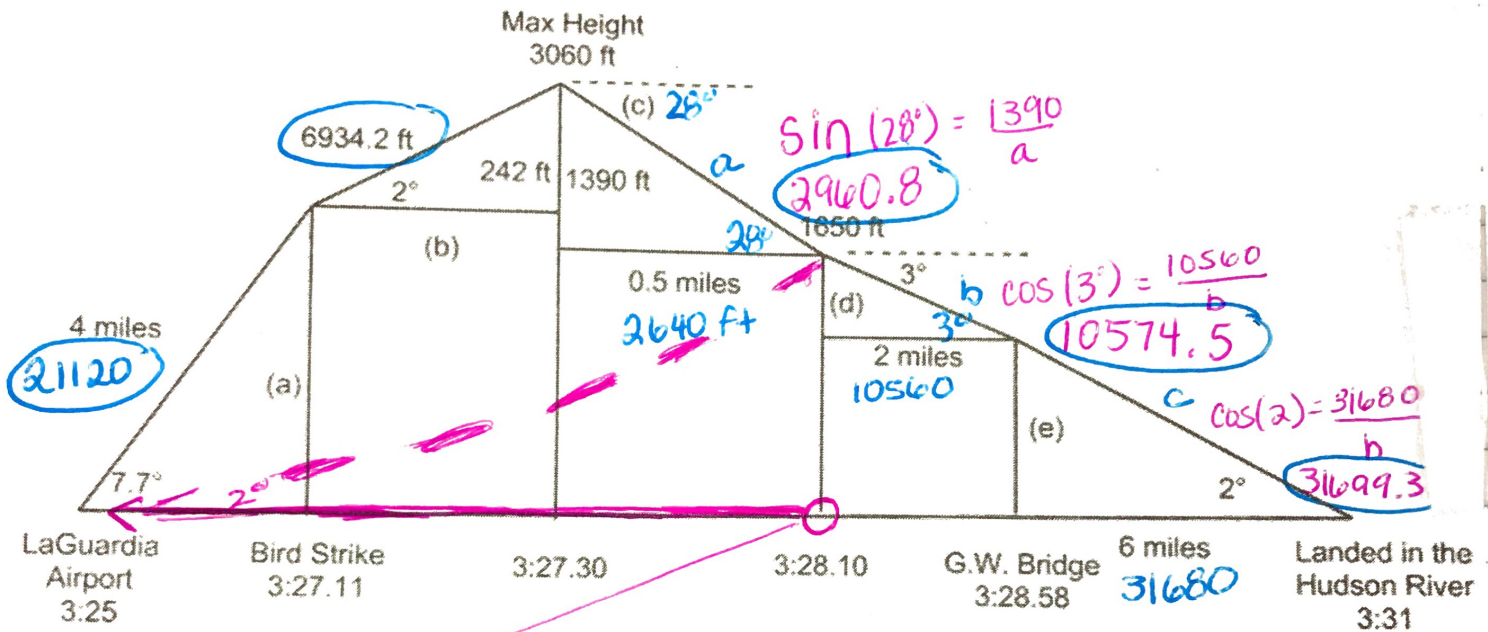


5b. $1106.3 - 212 = 894 \text{ ft}$
 c. Yes.

6. $21120 + 6934.2 + 2960.8 + 10574.5 + 31699.3 = 73288.8 \text{ ft} \approx 13.8 \text{ miles}$



He couldn't have made it back b/c it was almost 3 more miles.

⑨ 150 knots = 172.5 mph